

An Anglo-Saxon Strap-End from Bulwick, Northants

by Carolyn Dallas

The strap-end was found on Blackmore Thick Farm, Bulwick, Northants, at SP 982929, and thanks are owed to Mr and Mrs T. M. Colyer for permission to review the object (fig. 14).

The strap-end is 4.1cm long and is made of bronze which was originally tinned on all sides. The central panel contains an interlace design which was inlaid into the silver surface and is now largely missing (for a reconstruction see fig. 15). When the object was first found, it appeared that this inlay was made of gilt; but this has since dropped out. The terminal consists of an animal head with protruding eyes of yellow or clear glass. The ears are oval with lunate openings and there is some trace of eyebrow, although the object is much worn.

The split end has two rivet-holes with a pendant leaf motif in the intervening panel. The back is plain. The object is dateable to the ninth century A.D. and strap-ends in similar style have been found in various parts of the country (Wilson (1964), nos 71, 72, 138, 116; *cf.* nos 24, 137, 144).

The findspot has produced no other archaeological material, although the field has been ploughed down to the natural cornbrash and is watched by the Colyer family.

Bibliography

Wilson (1964) D. M. Wilson, *Ornamental Anglo-Saxon Metalwork*, 1964.



Fig 14 The Anglo-Saxon strap end from Bulwick

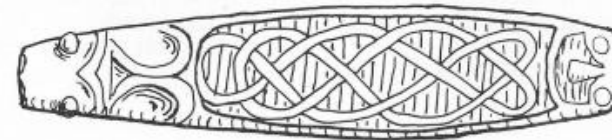


Fig 15 Reconstructed drawing of the strap end